



GARRISON



Four bedroom detached family home with integral double garage

This home features...

Beautifully designed SieMatic kitchen by Stuart Frazer with integrated NEFF appliances
Open plan kitchen/dining/entertainment area with bi-fold doors leading into rear garden

Four double bedrooms, two with ensembles

Large family bathroom and a spacious lounge

Utility and separate downstairs cloakroom

Generous turfed and fenced gardens

Double integral garage and paved parking area for two additional cars

Quality fixtures & fittings throughout

Prestige Collection

GARRISON

1792 ft² / 166m² Four bedroom detached home with double integral garage



GROUND FLOOR

Kitchen / Dining / Family

8.3m x 5.3m (Max)
27' 3" x 17' 5" (Max)

Lounge

3.7m x 6.8m (Max)
12' 1" x 22' 4" (Max)

Garage

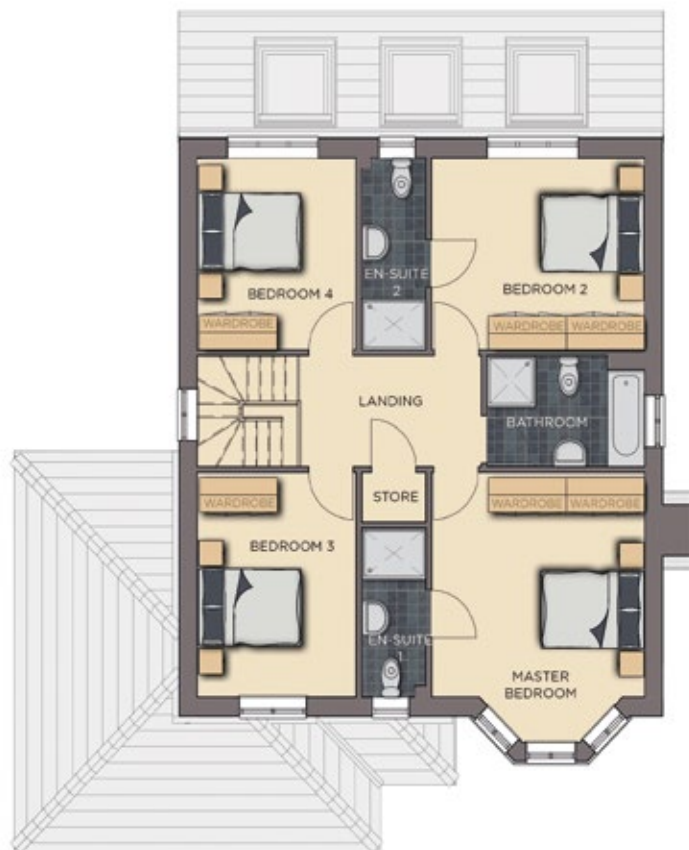
6.0m x 6.0m
19' 9" x 19' 9"

WC

1.6m x 1.0m
5' 3" x 3' 4"

Utility

2.4m x 1.6m
7' 11" x 5' 3"



FIRST FLOOR

Master Bedroom

4.0m x 4.7m (Max)
13' 2" x 15' 5" (Max)

En-suite 2

1.2m x 3.4m
4' 0" x 11' 2"

Bathroom

2.9m x 2.0m
9' 7" x 6' 7"

En-suite

1.2m x 3.0m
4' 0" x 9' 11"

Bedroom 3

3.0m x 4.0m (Max)
9' 11" x 13' 2" (Max)

Store

1.2m x 0.9m
4' 0" x 3' 0"

Bedroom 2

4.0m x 3.4m (Max)
13' 2" x 11' 2" (Max)

Bedroom 4

3.4m x 3.0m
11' 2" x 9' 11"

Benefits include...

- Beautiful SieMatic kitchen by Stuart Frazer with integrated NEFF appliances & Essentials wine cooler | 5 burner induction hob and glass splashback
- Skylights & bifold doors leading to fully fenced & turfed garden with patio | White Vitra sanitaryware with Hansgrohe fittings | Porcelanosa tiling
- Heated towel rails | Worcester Bosch heating system | USB points, brushed chrome sockets & downlighters | Panelled Oak Shaker doors
- White painted staircase with Oak handrails & newel posts | Neutral decor throughout | Security alarm | Smoke alarm | Fibre optic BT masterboxes
- Front landscaping and turfing | Exterior lighting | Integral Double Garage | Block-paved private driveway for additional two cars
- Fast car charging point | 10 year warranty... and so much more

++ See Create Homes' specification sheet for full details ++

The dimensions given are approximate only. Artist impressions are for illustrative purposes only.

CONSUMER
CODE FOR
HOME BUILDERS

www.consumercode.co.uk

create homes
CREATEHOMES.COM